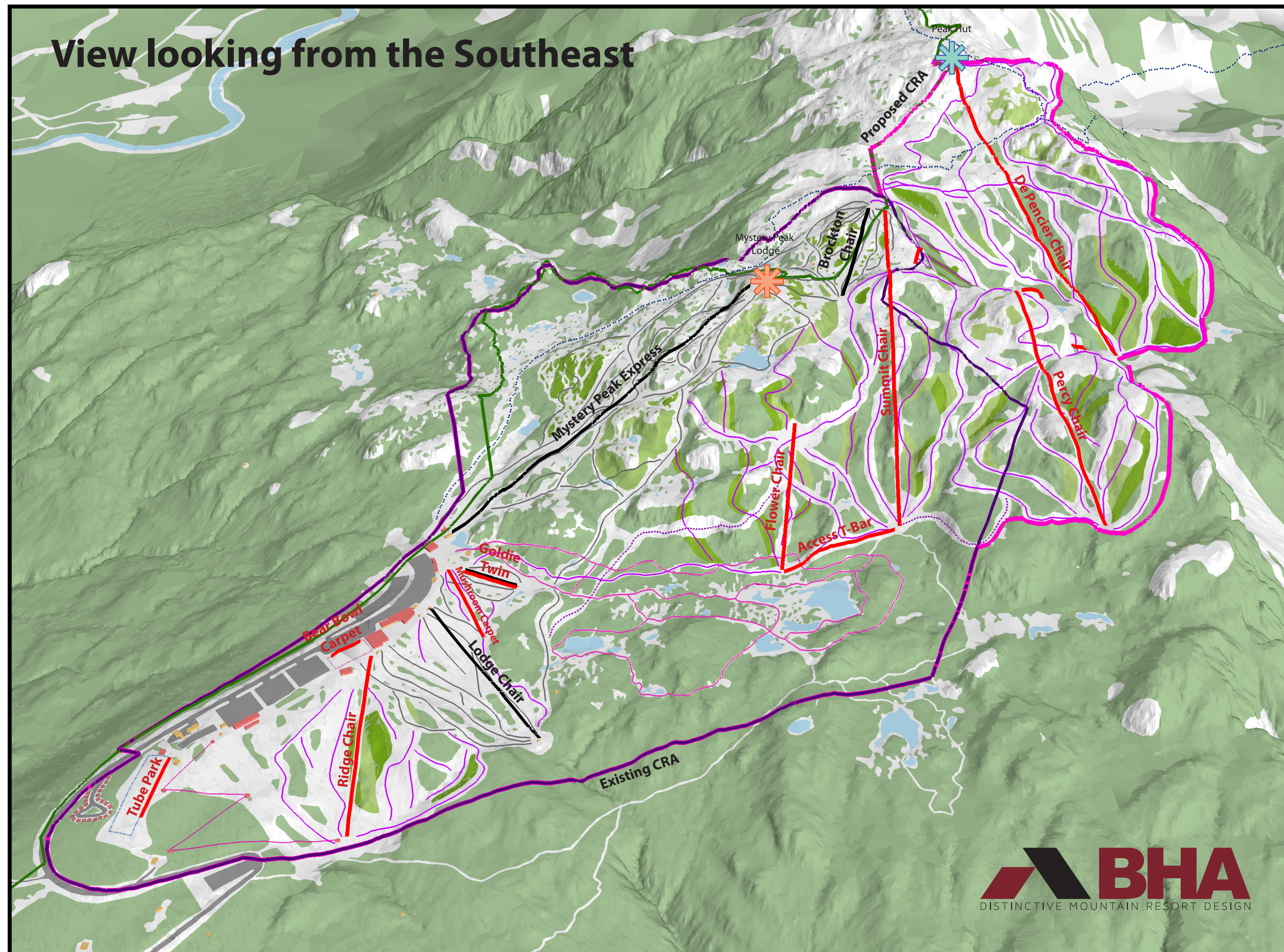
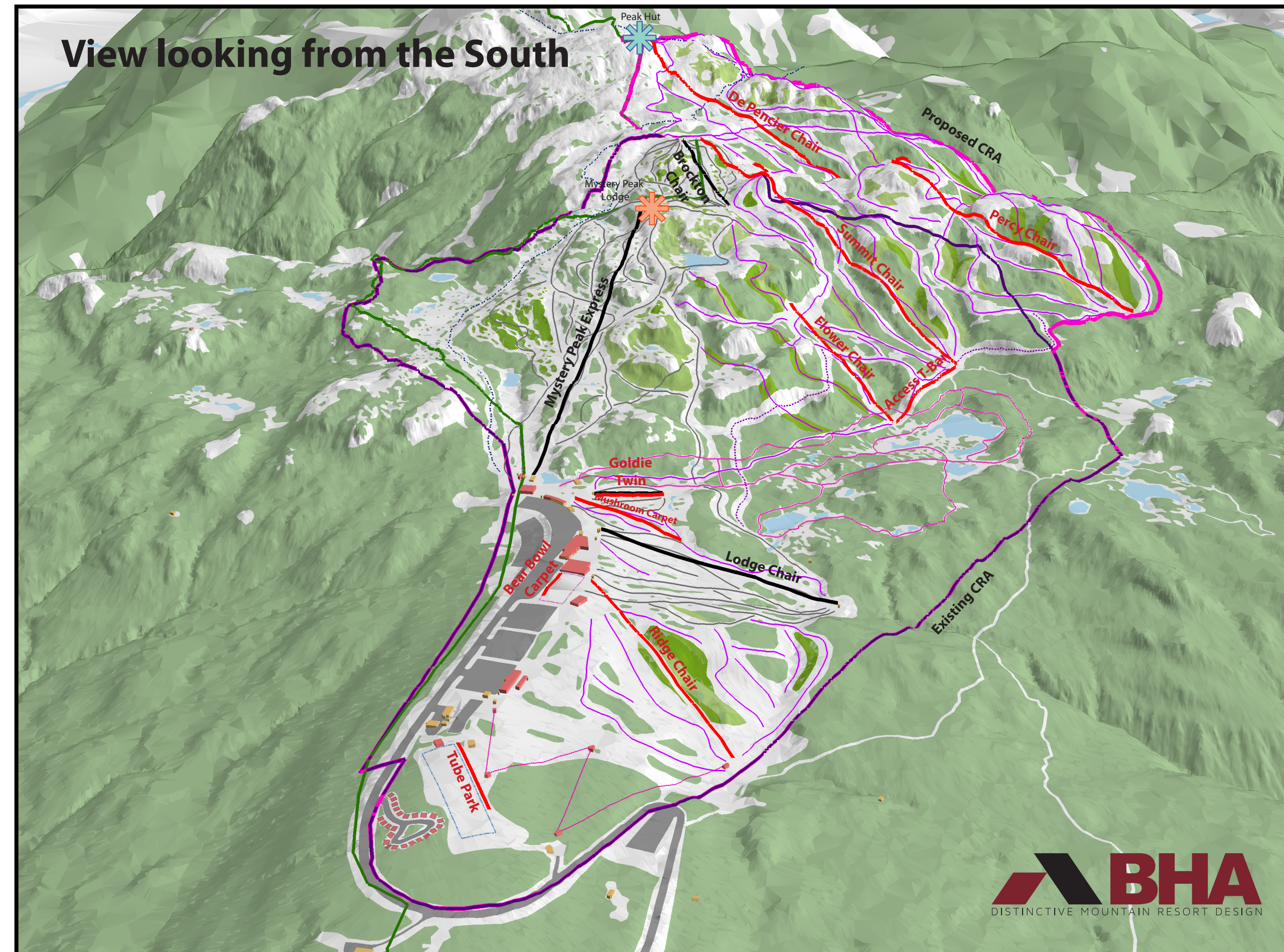


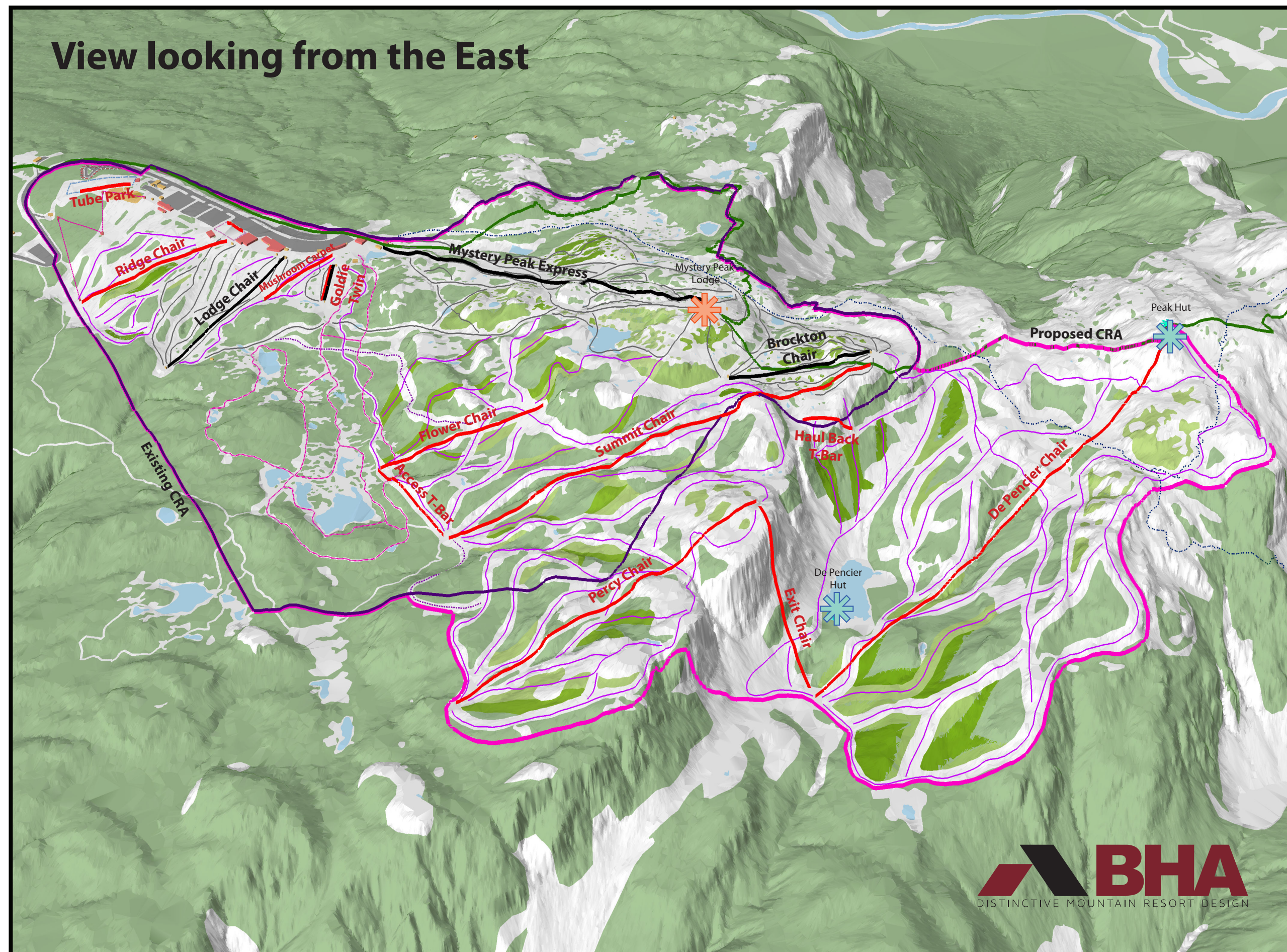
View looking from the Southeast



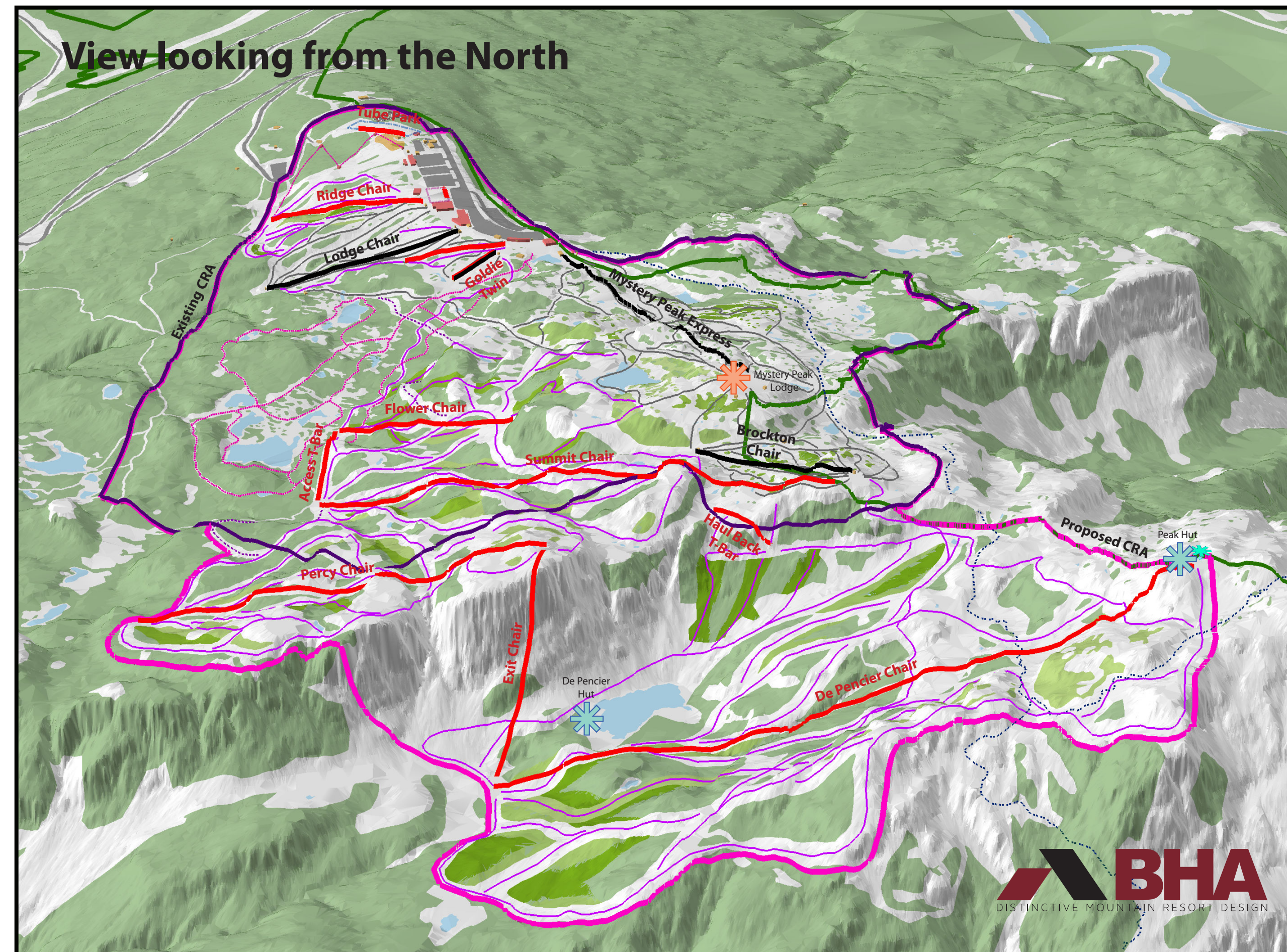
View looking from the South



View looking from the East



View looking from the North



Mt. Seymour Resort  
Resort Development Plan  
2026

- Legend**
- Mt Seymour Existing CRA
  - Proposed CRA
  - Mt Seymour Provincial Park
  - Existing Lifts
  - Proposed Lifts
  - Proposed Access
  - Proposed Ski Runs
  - Existing Ski Runs
  - Existing Winter Backcountry Access Routes
  - Existing Snowshoe Trails
  - Proposed Buildings
- Winter Activities**
- Potential Tube Park
- Proposed Glading**
- Dense Glading
  - Thin Glading
- Proposed Mountain Lodges**
- Restaurant/Cafe
  - Warming Hut

Planning by:

4-1005 Alpha Lake Road,  
Whistler, BC, Canada V8E 0H5  
Tel: 604 932 7002  
email: bha@brentharley.com  
website: www.brentharley.com

Prepared for:

Mt. Seymour Resort Ltd.  
1700 Mt. Seymour Road  
North Vancouver, BC, Canada V7G 1L3  
Tel: 604 986 2261  
email: snow@mtseymour.ca  
website: www.mtseymour.com

Statement of Limitations:  
The information included on this map has been compiled by BHA from a variety of sources and is subject to change without notice. BHA makes no representation or warranty, expressed or implied, as to accuracy, completeness, timeliness or rights to the use of such information. BHA shall not be liable for any general, special, indirect, incidental or consequential damages including, but not limited to, lost revenues or lost profits resulting from the use or misuse of the information contained on this map.

Mount Seymour  
Resort at  
Buildout - 3D