

SHUTTLE BUS INFORMATION



ECO-ADVENTURE / SEA TO SKY CAMP SHUTTLE BUS INFORMATION

Camp Participant: %%First Name%% %%Last Name%%
Camp Dates: %%Camp Dates%%
Shuttle location: %%Shuttle Location%%

Hello campers,

Below is all you need to know to get your young one(s) to and from the shuttle! Please take the time to read all of the information.

If your child is using the shuttle bus, please drop them off 10 minutes before departure and pick them up on time to keep our schedule running smoothly.

We are unable to accommodate changes to pickup/drop-off locations on the first day of camp. To make changes, contact us before 12:00pm on the Friday before the camp start date by calling 604-986-2261 option 3, or email summer@mtseymour.ca.

Sea to Sky participants getting the bus will be shuttled from their chosen pick-up location, via Parkgate Community Centre/Library, to Whey-ah-Wichen / Cates Park.

Location	Departure	Arrival
BCAA, Burnaby	8:00am	4:45pm
Grandview Superstore, East Vancouver	8:15am	4:30pm
North Vancouver Superstore	8:25am	4:35pm
Parkgate Community Centre/Library	8:40am	4:20pm

BCAA BURNABY SHUTTLE

Please use street parking on Willingdon Green when dropping off your camper. During drop-off and pick-up, guardians must walk their campers directly from the car to the bus. Please do not leave children unattended, even briefly, to cross the parking lot.

Location: [4569 Canada Wy, Burnaby, BC V5G 4L6](#)



[DIRECTIONS](#)

GRANDVIEW SUPERSTORE SHUTTLE

To ensure safety, please avoid parking in the pink-marked area shown below.

Due to increased shuttle use, this area is overcrowded, creating risks for campers, parents, and vehicles.

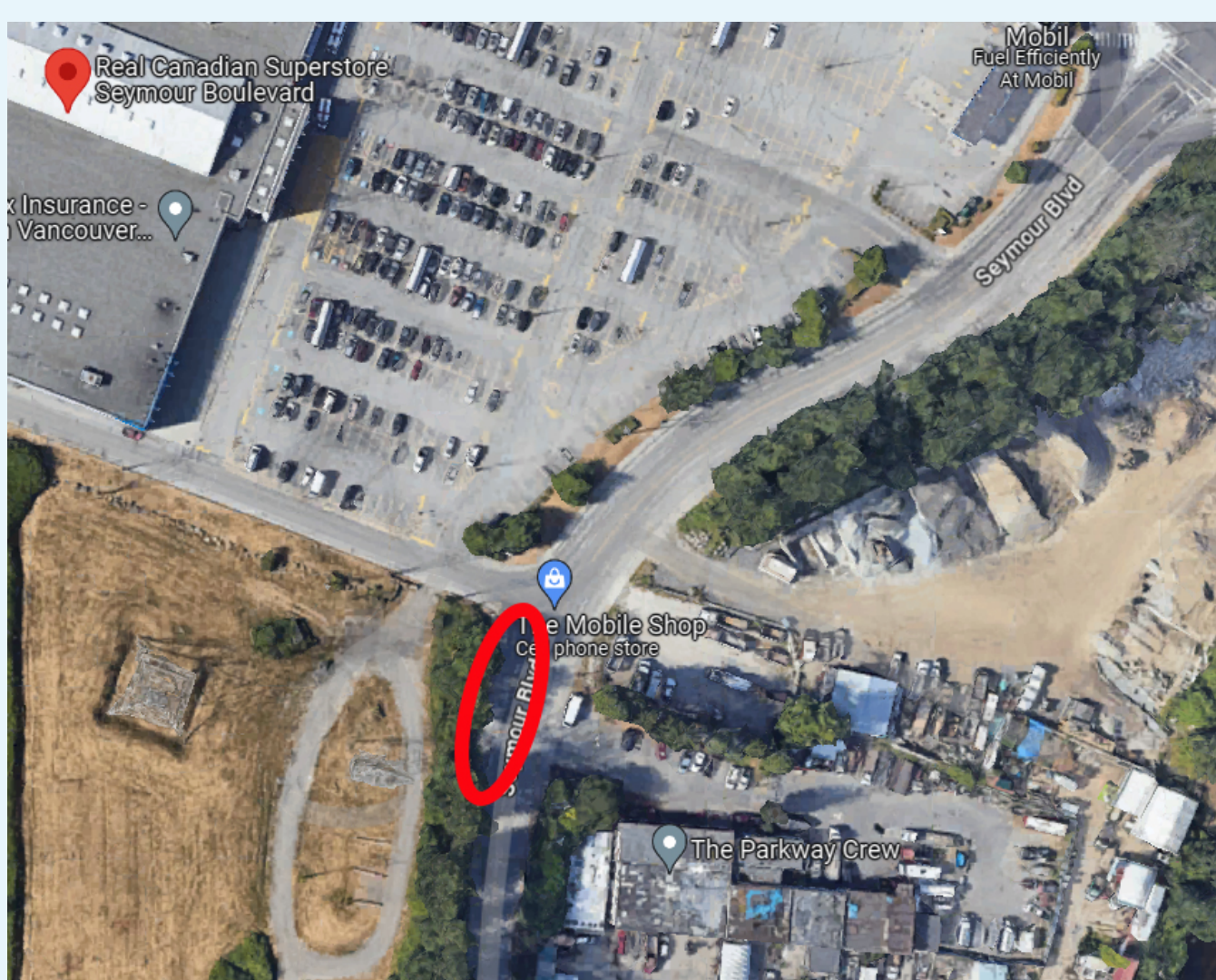
Location: [3185 Grandview Hwy, Vancouver, BC V5M 2E9](#)



[DIRECTIONS](#)

NORTH VAN SUPERSTORE SHUTTLE

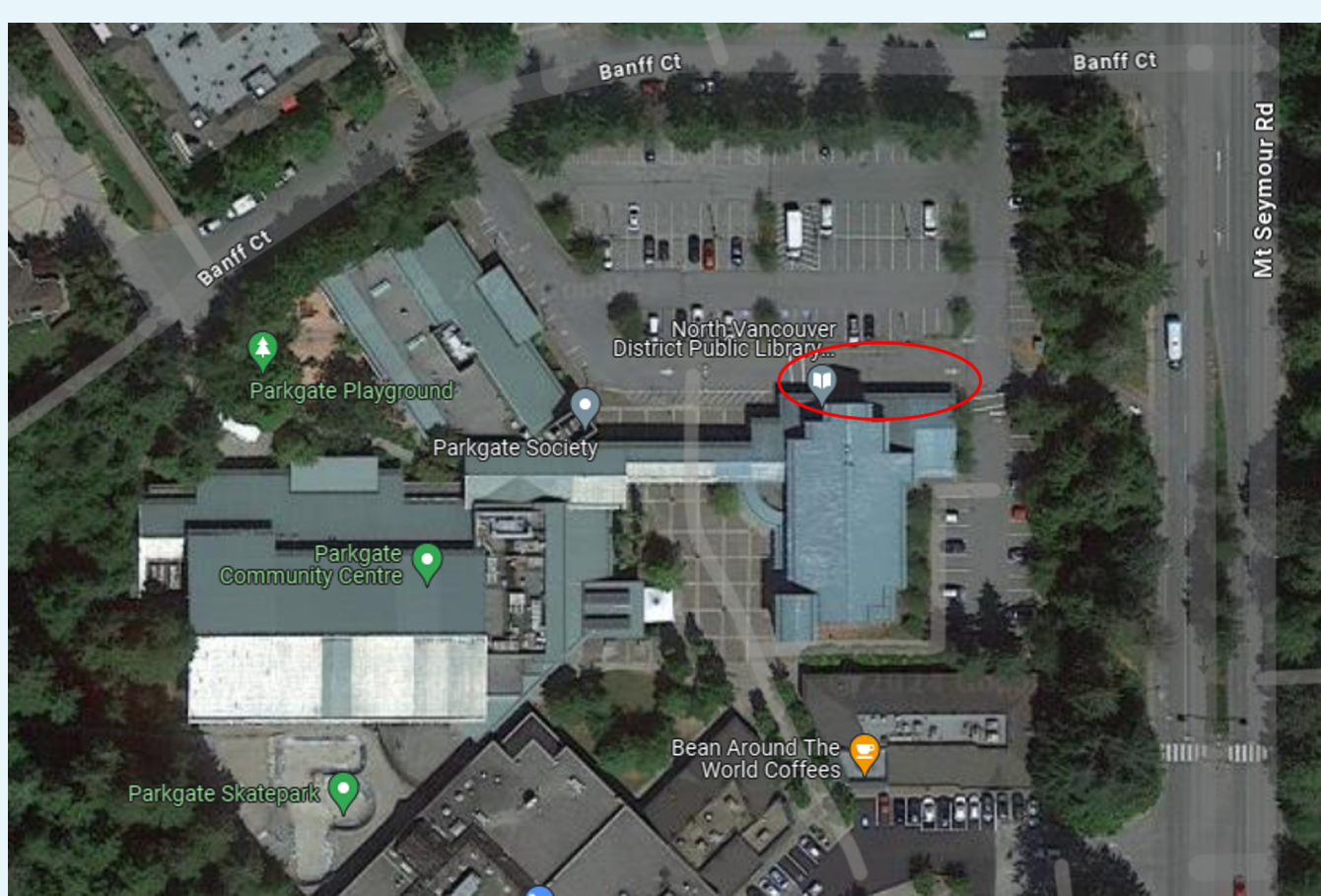
Location: [333 Seymour Blvd, North Vancouver, BC V7J 2J4](#)



[DIRECTIONS](#)

PARKGATE SHUTTLE

Location: [3675 Banff Ct, North Vancouver, BC V7H 2Z8](#)



[DIRECTIONS](#)

SIGN IN / OUT PROCEDURE

The Shuttle Bus Supervisor will have a Sign in / Sign Out Sheet with them, each row pertains to a child and looks just like below.

FIRST NAME	LAST NAME	SHUTTLE LOCATION	PARENT/GUARDIAN #1	PARENT GUARDIAN #2	AUTHORIZED PICKUPS	BUS #	MONDAY	TUESDAY
SAM	SEYMOUR	GRANDVIEW 55	SUSAN SEYMOUR 000-000-0000	JACK SEYMOUR 111-111-1111	SUSAN, JACK & JENNY SEYMOUR	1	SS	SS

The same parents/guardians will initial for drop off and pick up. For those driving up the mountain, the authorized parent is in place.

CONTACT INFORMATION

To reach our team during the week of your child's camp please contact:

Office: 604-986-2261 ext. 201
 Email: summer@mtseymour.ca

In the meantime, if you have any questions, please check out our [Frequently Asked Questions](#) at the bottom of the page or our website, give us a call at 604.986.2261 option 3, or send us an email by the end of the week prior to the start of your camp.

We look forward to meeting your little adventurers very soon!

Yours truly, wildly, and sincerely,

The Eco-Adventure Team



Mt Seymour acknowledges that we operate, live, and recreate on the unceded territory of the Coast Salish peoples, including the territories of the x'məkwəyəm (Musqueam), skwxwú7mesh (Squamish), and səlilwatał (Tsleil-Waututh) Nations. Mt Seymour is committed to true and lasting reconciliation with Indigenous peoples in Canada.

